



# 310 SERIES LAYER 2 MANAGED NETWORK SWITCHES

## Quick Start Guide

AN-310-SW-F/R-8  
AN-310-SW-F/R-16  
AN-310-SW-F/R-24  
AN-310-SW-F-48  
AN-310-SW-F/R-8-POE  
AN-310-SW-F/R-16-POE  
AN-310-SW-F/R-24-POE







## FCC Warning

Changes or modifications not expressly approved by the party responsible for compliance could void the user's authority to operate the equipment. This device complies with Part 15 of the FCC Rules. Operation is subject to the following two conditions:

- ① This device may not cause harmful interference, and
- ② This device must accept any interference received, including interference that may cause undesired operation.

**NOTE:** This equipment has been tested and found to comply with the limits for a Class A digital device, pursuant to part 15 of the FCC Rules. These limits are designed to provide reasonable protection against harmful interference when the equipment is operated in a commercial environment. This equipment generates, uses, and can radiate radio frequency energy and, if not installed and used in accordance with the instruction manual, may cause harmful interference to radio communications. Operations of this equipment in a residential area is likely to cause harmful interference in which case the user will be required to correct the interference at his own expense.



## CE Warning

This is a Class A product. In a domestic environment, this product may cause radio interference, in which case the user may be required to take adequate measures.

## UL Statement

All models have been evaluated by UL.

This device is intended for indoor use only. It should not be connected to an Ethernet network with outside plant routing.

The user must use the class I optical transceivers which conform to U.S. code of federal regulation, 21 CFR 1040.

This equipment is only to be connected to PoE networks without routing to outside plants.



# Welcome to Araknis Networks™

Thank you for choosing an Araknis 310-series Network Switch. With Gigabit connectivity on all ports, updated modern aesthetics, and a managed Layer 2 interface, the Araknis 310-series switch is a sleek and highly capable addition to any network.

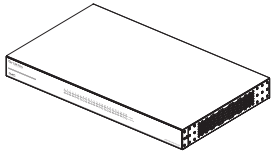
## Series Overview

Model	Ethernet Ports	SFP Ports	PoE Budget (Watts)
AN-310-SW-F/R-8	8	2	-
AN-310-SW-F/R-16	16	2	-
AN-310-SW-F/R-24	24	2	-
AN-310-SW-F-48	48	4	-
AN-310-SW-F/R-8-POE	8	2	130w
AN-310-SW-F/R-16-POE	16	2	250w
AN-310-SW-F/R-24-POE	24	2	375w

**NOTE:** All PoE models support both PoE (802.11af) and PoE+ (802.11at) standards.



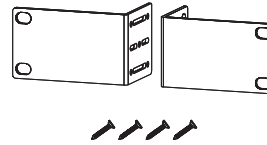
# Step 1: Unbox



Switch (1)



Rubber Feet for Flat Surfaces (4)



Rack-Mount Kit:  
Ears (2), Screws (8)



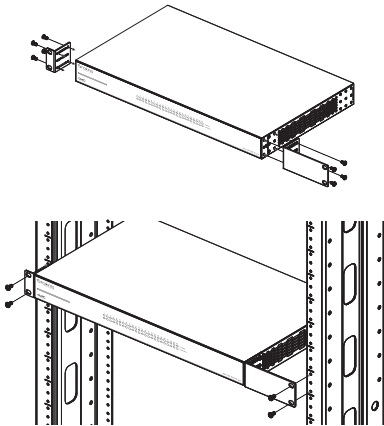
Quick Start Guide



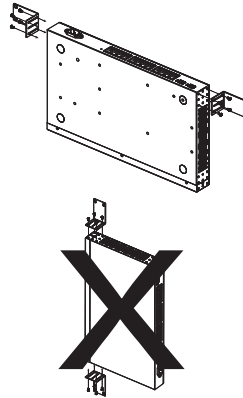
AC Power Cord

## Step 2: Install

### (A) Rack Mount

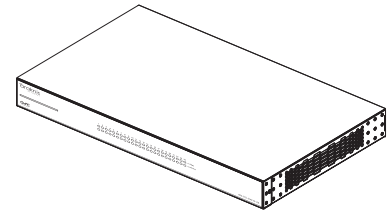


### (B) Wall Mount



The switch must be wall mounted with the Ethernet ports facing either the floor or the ceiling.

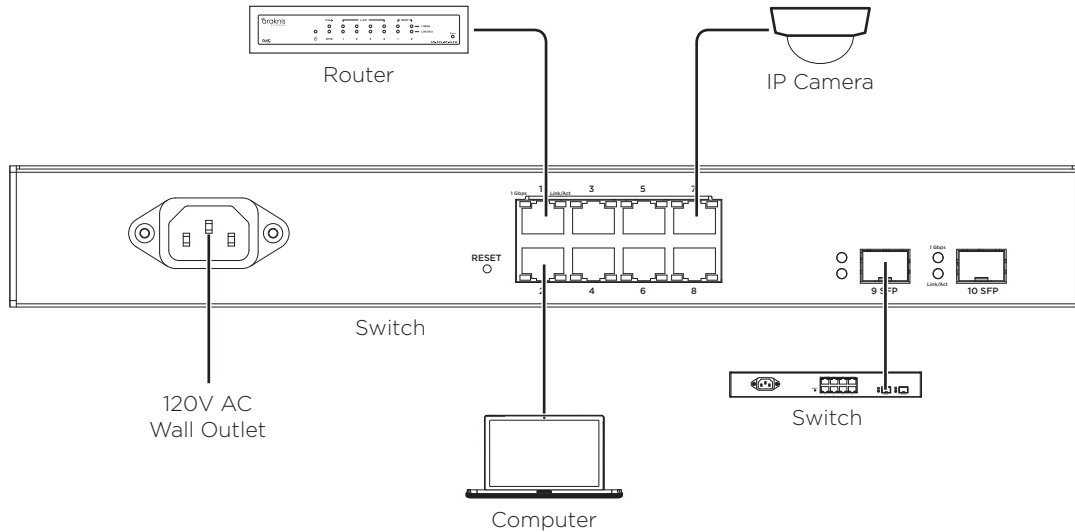
### (C) Shelf Mount



**NOTES:** Do not stack other equipment on top of the switch to avoid possible interference or damage.  
Mounting is the same for models with both front- and rear-facing ports.  
For the AN-310-SW-F/R-24-POE and AN-310-SW-F-48, wall mounting is not recommended.



## Step 3: Connect



**NOTE:** Connect SFP ports using Araknis SFP adapters for RJ45 or multi-mode fiber cables. SFP adapters sold separately.

**NOTE:** AN-310-SW-R-8-POE shown. Connection is the same for models with both front- and rear-facing ports.

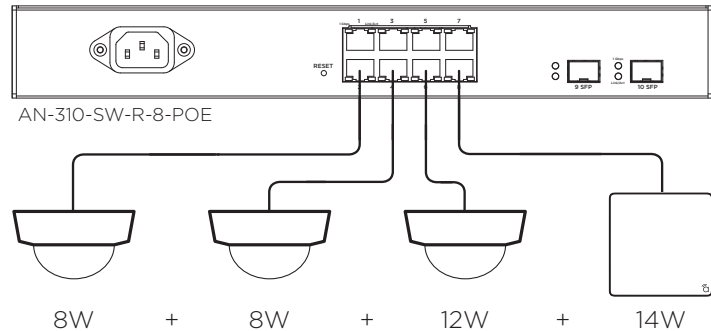




## Step 4: PoE Budget

The power budget for delivering Power over Ethernet limits the total number of watts available between all of the ports (limited to 30W total consumption on each port). Add the total number of watts consumed by all connected PoE devices to ensure that every thing can be powered, as illustrated in the example below.

Model	PoE Budget
AN-310-SW-F/R-8-POE	130W
AN-310-SW-F/R-16-POE	250W
AN-310-SW-F/R-24-POE	375W



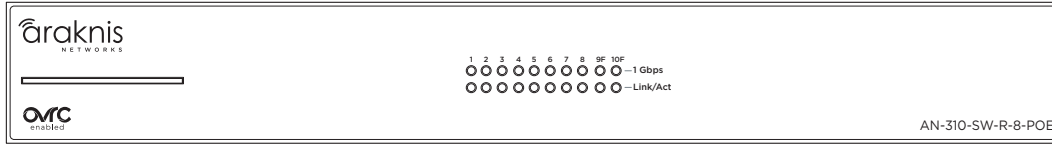
Total PoE Budget Available = 130W

Total PoE Device Consumption = 42W

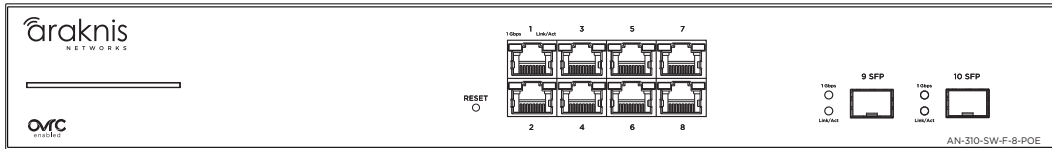
PoE Budget Left Available = 88W



## Step 5: Verify



AN-310-SW-R-8-POE



AN-310-SW-F-8-POE

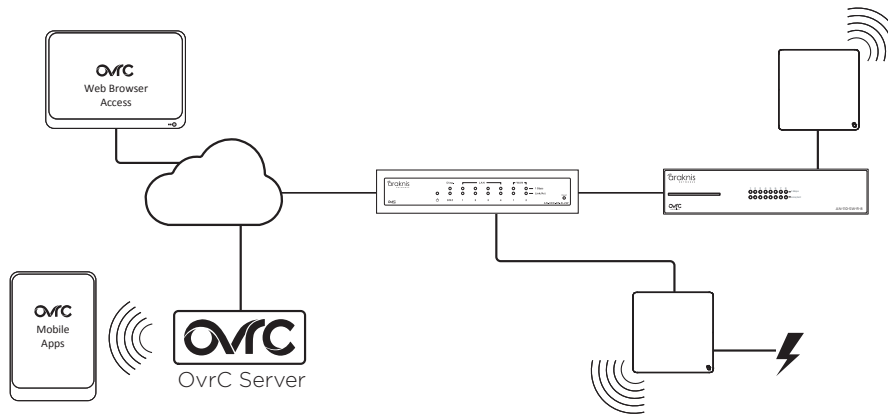
- (A) **Power LED** - On: system is up.  
Off: system is down.
- (B) **1Gbps LED** - On: port connected at 1000Mbps speed.  
Off: port is connected at 10/100Mbps speed.
- (C) **Link/Act LED** - On: port is connected to another device.  
Blinking: packets are running through the port.  
Off: port is not connected to a device.



## Step 6: Connect Device to OvrC Account

OvrC provides remote firmware upgrades, real-time notifications, and intuitive customer management, right from your computer or mobile device. Setup is plug-and-play, with no port forwarding or DDNS address required. To add this device to your OvrC account:

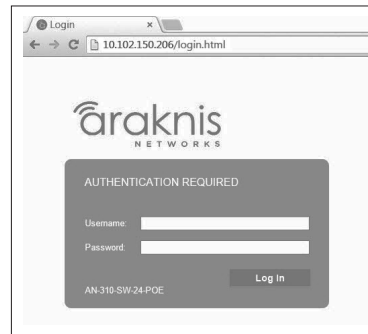
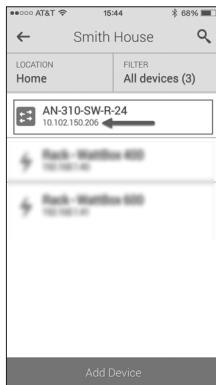
- (A) Connect the switch to the network (Internet access required).
- (B) Log Into OvrC ([www.ovrc.com](http://www.ovrc.com)) or load the OvrC app.
- (C) Add the device (MAC address and Service Tag numbers needed for authentication).





## Step 7: Log into Web Interface

- (A) In the OvrC interface, find the IP address of the switch in the customer device list.
- (B) Open a web browser and enter the IP address to navigate to the switch interface (must be on the same LAN).
- (C) Log in to the interface using the default credentials:



Username	araknis
Password	araknis

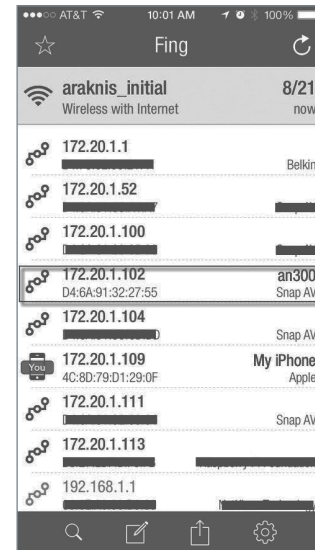


## Other Access Methods: DHCP IP Address

The switch is configured to be DHCP by default so that it can receive a new IP address when connected to the network (the DHCP server is usually in the network router). If you haven't connected the switch to your OvrC account yet, use one of these methods to find its IP address:

- Check the client table on your router.
- Use a network scanner (e.g. Fing) to sniff the network. The switch manufacturer field will display “Araknis”.

*See the highlighted field in the Fing screenshot to the right for an example of an Araknis device being identified.*



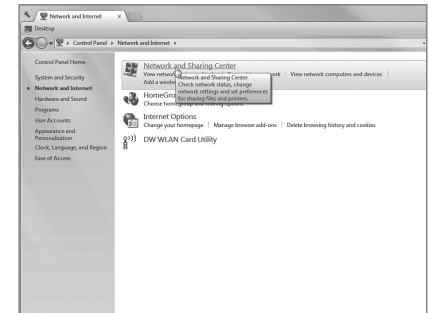
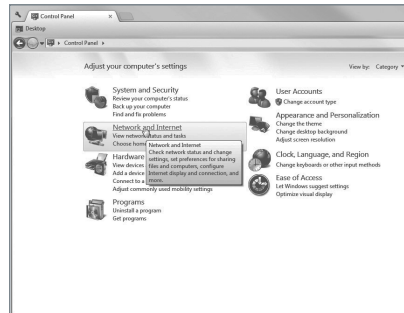
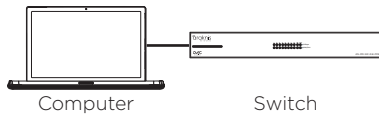


## Other Access Methods: Default IP Address

If the switch is not issued an IP address on the network, or needs to be accessed while not connected to a network, you can configure your computer's network connection to allow access using the default IP address, **"192.168.20.254"**.

*Windows 7 screenshots shown for reference.*

- (A) Connect your PC to the switch using a network patch cable.
- (B) On your PC, open the Control Panel and left-click "Network and Internet".
- (C) Left-click "Network and Sharing Center".

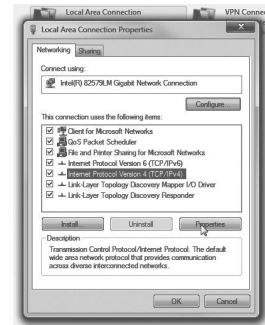
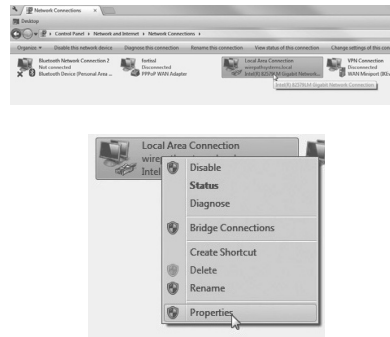
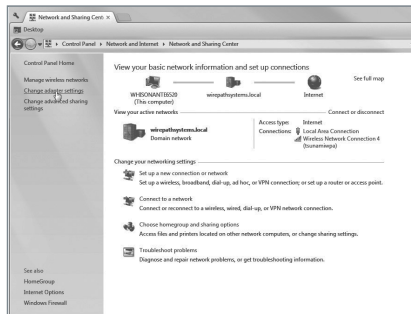




# Other Access Methods: Default IP Address Cont'd

Windows 7 screenshots shown for reference.

- (D) In the left bar, left-click “Change adapter settings”.
- (E) Right-click the icon for the wired network connection and left-click “Properties”.
- (F) Left-click to highlight “Internet Protocol Version 4 (TCP/IPv4), then left-click “Properties”.



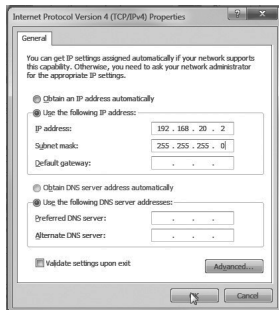


# Other Access Methods: Default IP Address Cont'd

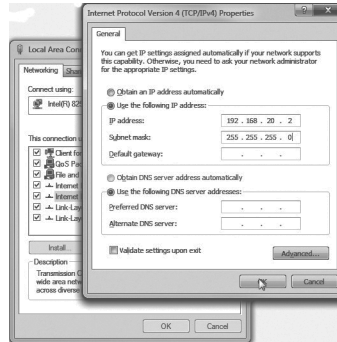
Windows 7 screenshots shown for reference.

- Ⓒ In the “General” tab, left-click “Use the following IP address:” and enter the IP address and subnet mask.

IP Address	192.168.20.2
Subnet Mask	255.255.255.0

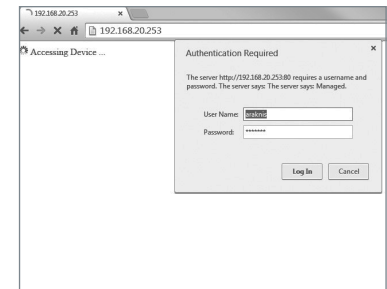


- Ⓓ Left-click “OK” to close Internet Protocol Version 4 (TCP/IPv4) Properties, then left-click “OK” to close wireless network connection properties.



- Ⓔ Open a web browser and navigate to the address: **http://192.168.20.254**. Log in using the default credentials:

Username	araknis
Password	araknis

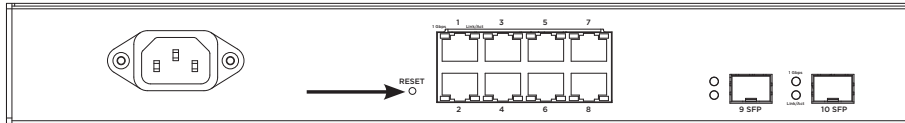




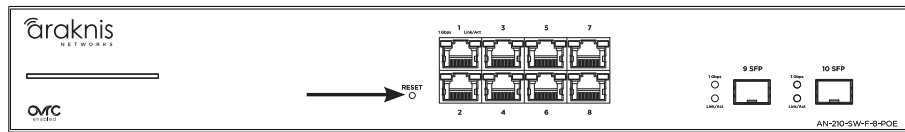


# Pro Tip: Resetting the Switch

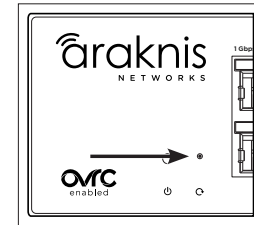
## Rear Facing Models



## Front Facing Models



## 48 Port Models



**Reboot -** Press and hold the RESET button on the back of the switch for 5 seconds, then release. The switch will power cycle and the front status lights will flash.

**Factory Reset -** Press and hold the RESET button for 10-15 seconds until the status LEDs flash once. The switch will power cycle and be reset to factory default settings.





## 2-Year Limited Warranty

Araknis Networks® products have a 2-Year Limited Warranty. This warranty includes parts and labor repairs on all components found to be defective in material or workmanship under normal conditions of use. This warranty shall not apply to products that have been abused, modified, or disassembled. Products to be repaired under this warranty must be returned to a designated service center with prior notification and an assigned return authorization (RA) number. Contact technical support for an RA number.

## Contact Information

- Ⓜ [araknisnetworks.com](http://araknisnetworks.com)
- Ⓟ Technical Support (866) 838-5052
- ⓧ [techsupport@araknisnetworks.com](mailto:techsupport@araknisnetworks.com)

