



## GRILLE PAINTING INSTRUCTION GUIDE

Many of our speaker grilles rely on adhesive to keep them in-place. This adhesive must be applied after painting of the grilles is completed, for this reason the adhesive is shipped unapplied when paintable grilles are specified in the order.

There are two types of paintable grilles currently supplied by James by Sonance. The supplied grille type depends on the product ordered. For example, if you've ordered from the SXC, QXC, QX, and SLT series you'll receive a grille and a grille frame with snap connections (grille pins) or magnets. If you've ordered from the FXA, FXC, FXCQ, OW, UE, SA, Wedge or the SPL series, then you'll receive a grille that uses strips of foam with adhesive on the back. These foam pads apply consistent pressure to keep the grille in place. Instructions on how to install both grille types can be found below.

### INSTRUCTIONS

1. Once received the grille can be painted to better match the installation environment.

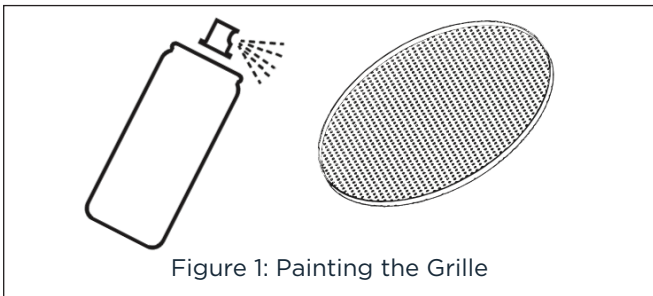


Figure 1: Painting the Grille

2. After the paint has completely dried, sand to roughen the areas where the adhesive is to be applied. For grilles with a grille frame, sand the underside of the grille about one inch in from the outer diameter of the grille. For grilles without a grille frame sand the entire raised lip of the grille.

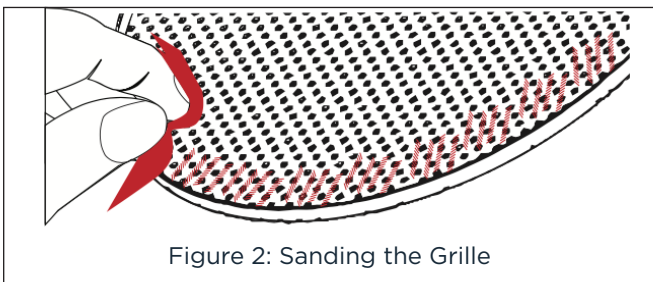


Figure 2: Sanding the Grille

3. Once the sanding has been completed, use a lint-free cloth or compressed air to clean the sanded surface.

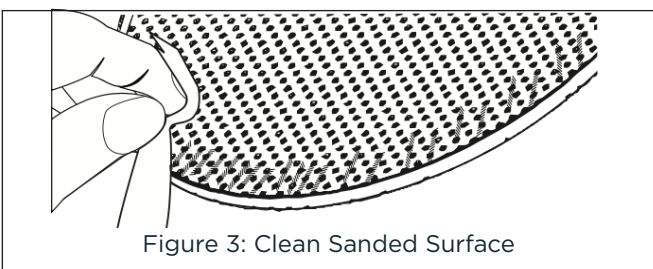


Figure 3: Clean Sanded Surface

4. If using foam adhesive, evenly line the edges of the grille with the foam, making sure to fold the excess toward the back of the grille to avoid the foam from showing on the front when installed.

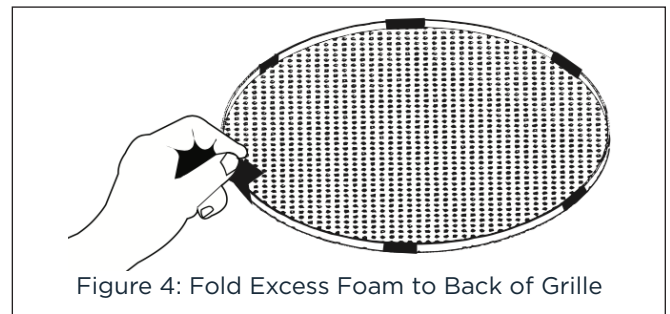


Figure 4: Fold Excess Foam to Back of Grille

5. If supplied with a grille frame remove the tape from the rear of the grille frame to expose the adhesive, then flip the grille frame, firmly and evenly press the side with the adhesive onto the back of the grille to secure it into place.

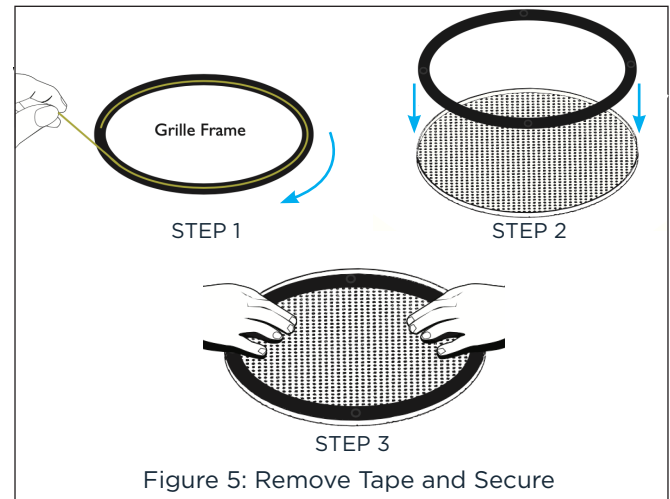


Figure 5: Remove Tape and Secure

6. Once the grille is assembled, it can now be installed on to the speaker enclosure to finish the installation.

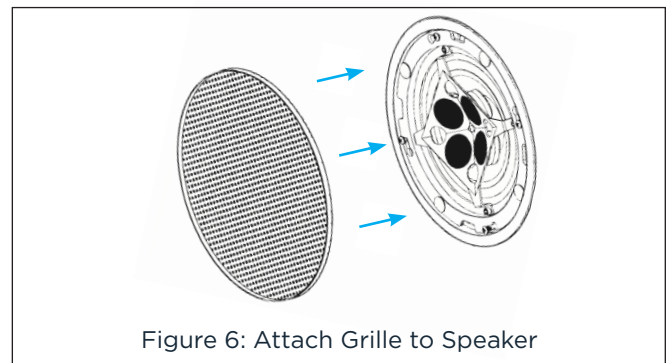


Figure 6: Attach Grille to Speaker