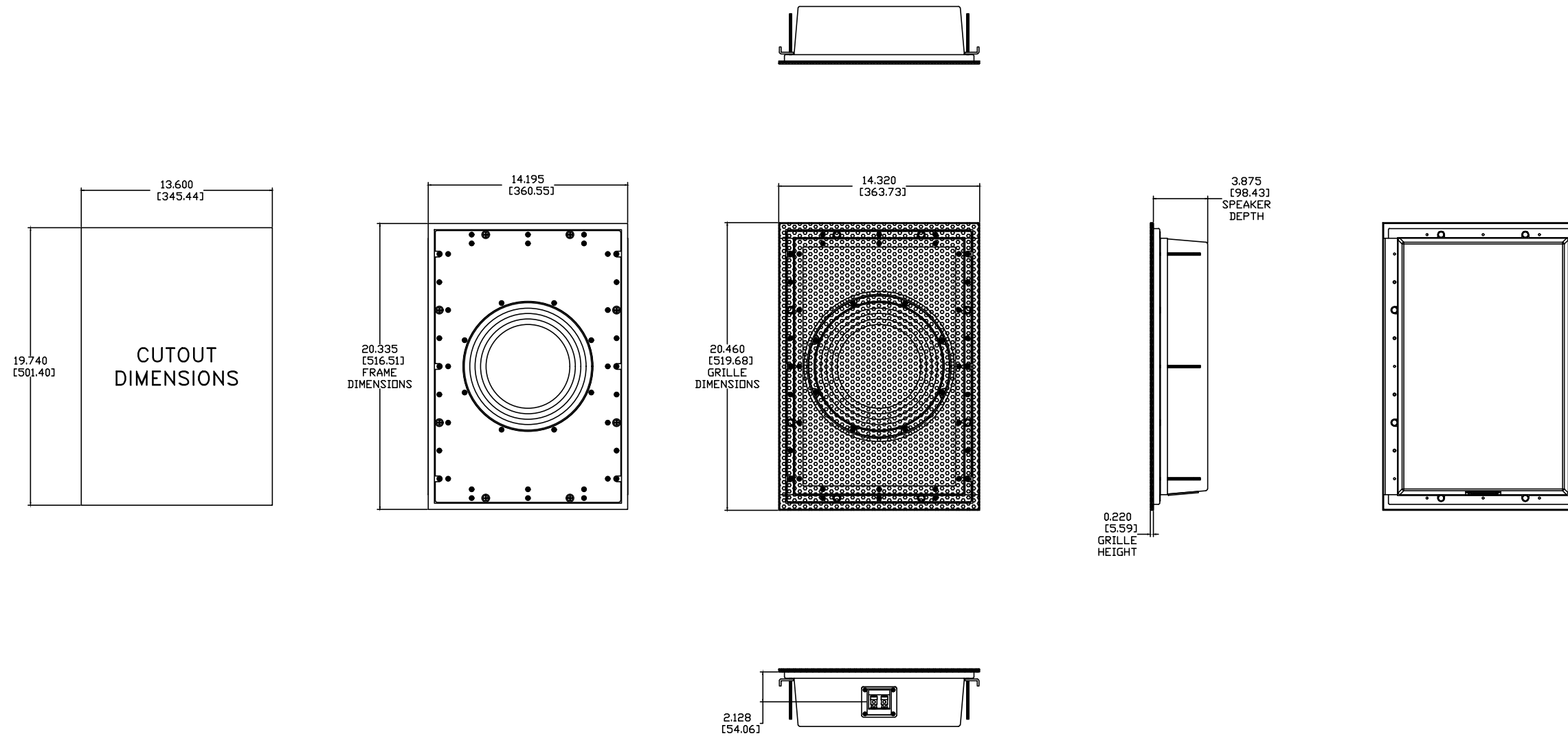
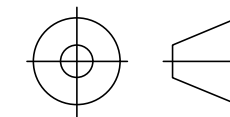


REVISIONS				
ECN	REV.	DESCRIPTION	DATE	APPROVED
	A	RELEASE FOR PRODUCTION	12-27-11	
	B	MODIFIED PRE CONSTRUCTION BOARD	03-12-12	
	C	MODIFIED PRE CONSTRUCTION BOARD	03-28-13	
13005	D	CHANGE TERMINAL SCREW HOLE SIZE/TAP	04-12-13	
	E	CHANGED BRACKET HOLE LOCATIONS	04-02-15	
	F	ADD 4 MORE GRILLE PIN CUPS	09-08-15	
22030	G	REDESIGN WITH GRILLE MAGNETS	12-14-22	



NOTES:

- 1: MATERIAL - 5052 ALUMINUM
UNLESS OTHERWISE SPECIFIED
- 2: FINISH:
GRILLE - GLOSS WHITE POWDER COAT
FRONT PLATE, MOUNTING PLATE, GRILLE FRAME, WOOFER SPACER - STUDIO BLACK POWDER COAT
HOUSING, BRACKET - TBD
UNLESS OTHERWISE SPECIFIED



"THIRD ANGLE" PROJECTION

PROPRIETARY INFORMATION
THE DESIGNS, INFORMATION, AND DATA CONTAINED HEREIN ARE PROPRIETARY AND ARE SUBMITTED IN CONFIDENCE, AND SHALL NOT BE DISCLOSED, USED OR DUPLICATED IN WHOLE OR IN PART, FOR ANY PURPOSES WHATSOEVER, WITHOUT THE PRIOR WRITTEN PERMISSION OF JAMES LOUDSPEAKER LLC, 2185 PARK PL, MINDEN, NV 89423. THIS LEGEND SHALL BE MARKED ON ANY REPRODUCTIONS HEREOF IN WHOLE OR IN PART. RECEIPT OF THIS DOCUMENT SHALL BE DEEMED TO BE AN ACCEPTANCE OF THE CONDITIONS SPECIFIED HEREIN.

JAMES LOUDSPEAKER

QX1010

EXTERNAL DIMENSIONS

P/N: -

DWR #: 111227-G00

REVISED BY: S. LOESCH

DRAWN BY: M. PARK

DATE: 12-27-11

APPROVED:

DRAFTING APPROVED:

SCALE:

TOLERANCES: ANG: ± = .5° FRACT. ± = 1/32
DECIMALS: .XX ± = .01 .XXX ± = .005

REVISION: G